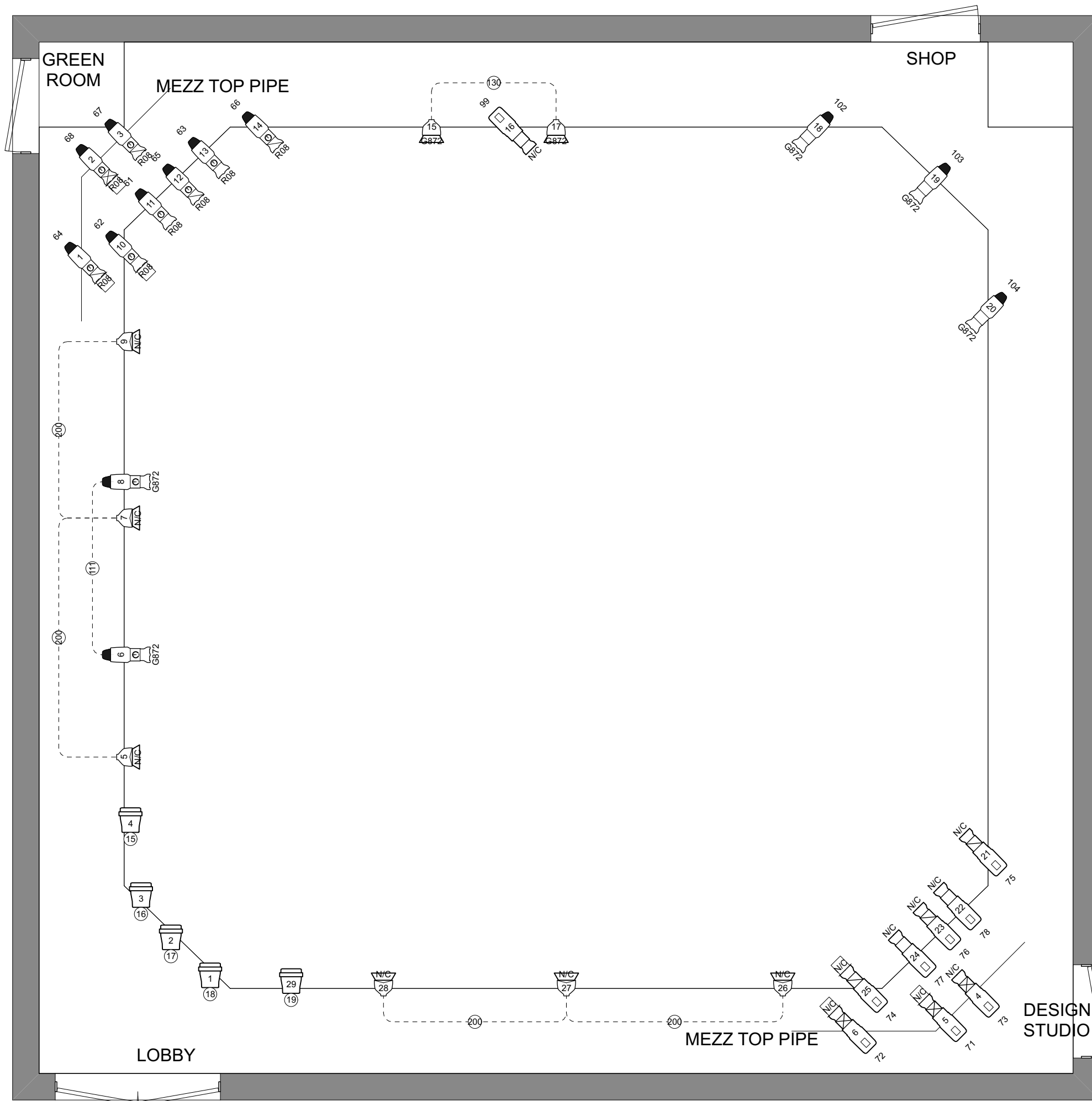


NOTES
1K Fresnel should be unlicensed

KEY

	ETC Source4 19deg 750W	11 / 24
	ETC Source4 26deg 750W	15 / 56
	ETC Source4 36deg 750W	30 / 97
	ETC Source4 50deg 750	1 / 24
	ETC Source4 26deg	4 / 56
	ETC Source4 PAR MFL	2 / 44
	ETC Source4 PAR WFL	6 / 44
	ETC Source4 PARNel	10 / 20
	Altman 1K Fresnel	1 / 21
	Altman Q-Lite	1 / 5
<hr/>		
	Altman Phoneix LED 19 deg	6 / 24
	Altman Phoneix LED 26 deg	7 / 56
	Altman Phoneix LED 36 deg	8 / 97
	Altman Phoneix LED 50 deg	3 / 24
	Chauvet DJ SlimPAR Pro H USB	1 / 0
	Chauvet COLORado 2 Quad Zoom Tour	20 / 26
	USITT Practical	3 / 0
<hr/>		
	I-Cue	1 / 1
	S4B Template Holder	46 / 63
	7.5in 4 Leaf Barn Door	8 / 12
	USITT 3in Top Hat	9 / 12
	Image Projector	4 / 4

SHOW NAME			
THE PLACE THAT MADE YOU			
LD	ME	ME	
I. DEMARCHI	D. SALINGER	M. EVANS	
SCALE	LAYER	DATE	PLATE
1/4" = 1'-0"	CATS	2.18.23	1/3



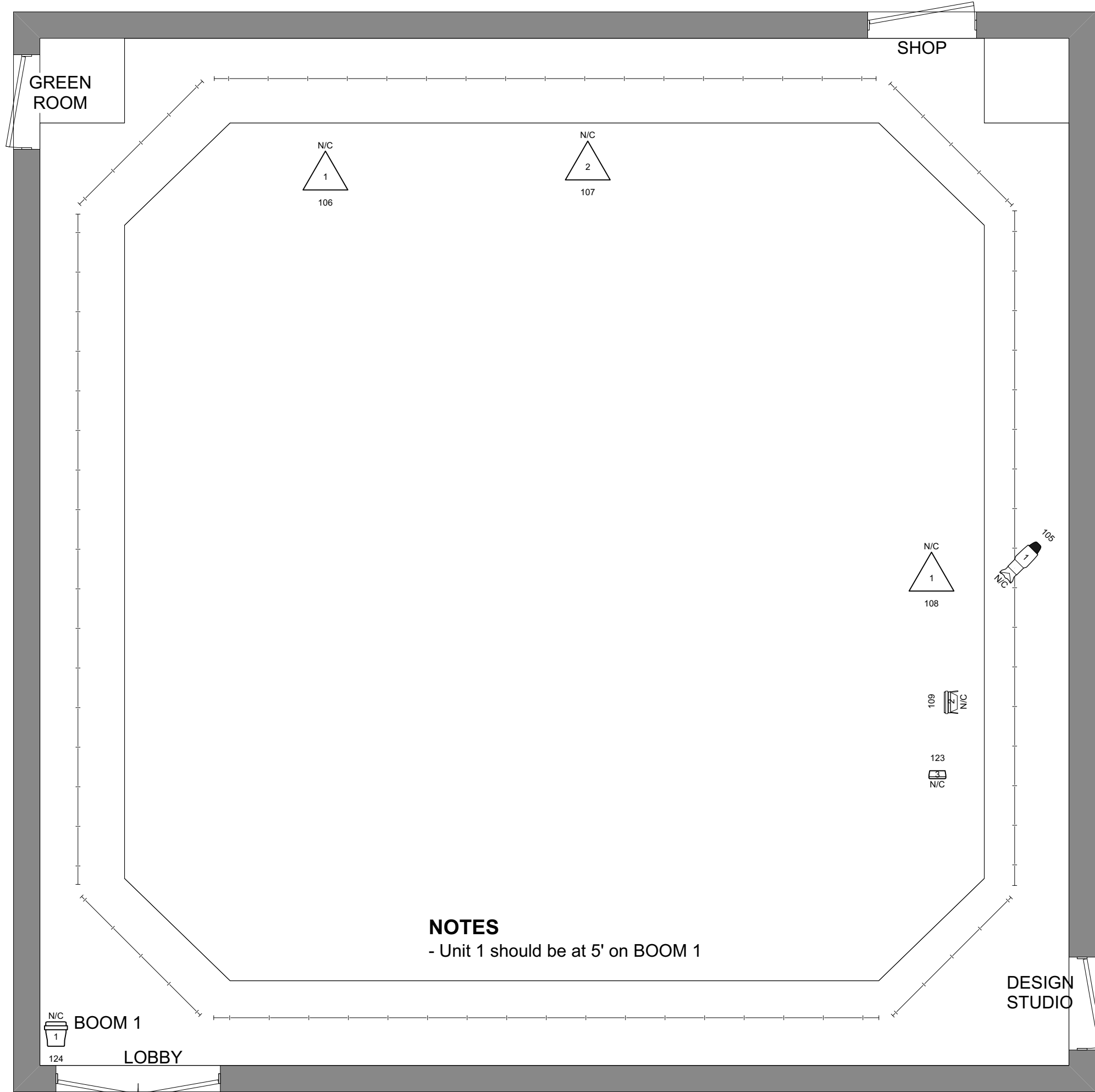
KEY

	ETC Source4 19deg 750W	11 / 24
	ETC Source4 26deg 750W	15 / 56
	ETC Source4 36deg 750W	30 / 97
	ETC Source4 50deg 750	1 / 24
	ETC Source4 26deg	4 / 56
	ETC Source4 PAR MFL	3 / 44
	ETC Source4 PAR WFL	6 / 44
	ETC Source4 PARNel	10 / 20
	Altman 1K Fresnel	0 / 21
	Altman Q-Lite	1 / 5

	Altman Phoneix LED 19 deg	6 / 24
	Altman Phoneix LED 26 deg	7 / 56
	Altman Phoneix LED 36 deg	8 / 97
	Altman Phoneix LED 50 deg	3 / 24
	Chauvet DJ SlimPAR Pro H USB	1 / 0
	Chauvet COLORado 2 Quad Zoom Tour	20 / 26
	USITT Practical	3 / 0

	I-Cue	1 / 1
	S4B Template Holder	46 / 63
	7.5in 4 Leaf Barn Door	8 / 12
	USITT 3in Top Hat	9 / 12
	Image Projector	4 / 4

SHOW NAME			
THE PLACE THAT MADE YOU			
LD	ME	ME	
I. DEMARCHI	D. SALINGER	M. EVANS	
SCALE	LAYER	DATE	PLATE
1/4" = 1'-0"	MEZZ	2.18.23	2/3



KEY

	ETC Source4 19deg 750W	11 / 24
	ETC Source4 26deg 750W	15 / 56
	ETC Source4 36deg 750W	30 / 97
	ETC Source4 50deg 750	1 / 24
	ETC Source4 26deg	4 / 56
	ETC Source4 PAR MFL	3 / 44
	ETC Source4 PAR WFL	6 / 44
	ETC Source4 PARNel	10 / 20
	Altman 1K Fresnel	0 / 21
	Altman Q-Lite	1 / 5
<hr/>		
	Altman Phoneix LED 19 deg	6 / 24
	Altman Phoneix LED 26 deg	7 / 56
	Altman Phoneix LED 36 deg	8 / 97
	Altman Phoneix LED 50 deg	3 / 24
	Chauvet DJ SlimPAR Pro H USB	1 / 0
	Chauvet COLORado 2 Quad Zoom Tour	20 / 26
	USITT Practical	3 / 0
<hr/>		
	I-Cue	1 / 1
	S4B Template Holder	46 / 63
	7.5in 4 Leaf Barn Door	8 / 12
	USITT 3in Top Hat	9 / 12
	Image Projector	4 / 4

SHOW NAME			
THE PLACE THAT MADE YOU			
LD	ME	ME	
I. DEMARCHI	D. SALINGER	M. EVANS	
SCALE	LAYER	DATE	PLATE
1/4" = 1'-0"	DECK	2.18.23	3/3

Channel Hookup

Channel	Pos	U#	Instrument Type & Accessory & Load	Purpose	Clr & Gbo	Address	VWF
(1)	CAT A	8	Chauvet COLORado 2 Quad Zoom Tour 205w	COLOR DOWN	N/C	2/10	D1
(2)	CAT A	13	Chauvet COLORado 2 Quad Zoom Tour 205w	COLOR DOWN	N/C	2/30	D3
(3)	CAT A	15	Chauvet COLORado 2 Quad Zoom Tour 205w	COLOR DOWN	N/C	2/50	D2
(4)	CAT C	6	Chauvet COLORado 2 Quad Zoom Tour 205w	COLOR DOWN	N/C	3/10	D5
(5)	CAT B	6	Chauvet COLORado 2 Quad Zoom Tour 205w	COLOR DOWN	N/C	4/10	D6
(6)	CAT C	3	Chauvet COLORado 2 Quad Zoom Tour 205w	COLOR DOWN	N/C	3/30	D4
(7)	CAT C	4	Chauvet COLORado 2 Quad Zoom Tour 205w	CENTER COLOR DOWN	N/C	3/50	
(8)	CAT C	8	Chauvet COLORado 2 Quad Zoom Tour 205w	COLOR DOWN	N/C	3/70	D9
(9)	CAT B	2	Chauvet COLORado 2 Quad Zoom Tour 205w	COLOR DOWN	N/C	4/30	D10
(10)	CAT D	12	Chauvet COLORado 2 Quad Zoom Tour 205w	COLOR DOWN	N/C	3/90	D7
(11)	CAT C	11	Chauvet COLORado 2 Quad Zoom Tour 205w	COLOR DOWN	N/C	3/110	D8
(12)	CAT E	4	Chauvet COLORado 2 Quad Zoom Tour 205w	COLOR DOWN	N/C	4/50	D11
(13)	CAT E	6	Chauvet COLORado 2 Quad Zoom Tour 205w	COLOR DOWN	N/C	4/70	D12
(14)	CAT E	11	Chauvet COLORado 2 Quad Zoom Tour 205w	COLOR DOWN	N/C	4/90	D13
(15)	MEZZ	4	Chauvet COLORado 2 Quad Zoom Tour 205w	LOW FRONT FILL	N/C	5/10	FF1
(16)	MEZZ	3	Chauvet COLORado 2 Quad Zoom Tour 205w	LOW FRONT FILL	N/C	5/30	FF2
(17)	MEZZ	2	Chauvet COLORado 2 Quad Zoom Tour 205w	LOW FRONT FILL	N/C	5/50	FF3
(18)	MEZZ	1	Chauvet COLORado 2 Quad Zoom Tour 205w	LOW FRONT FILL	N/C	5/70	FF4

Channel	Pos	U#	Instrument Type & Accessory & Load	Purpose	Clr & Gbo	Address	VWF
(19)	MEZZ	29	Chauvet COLORado 2 Quad Zoom Tour 205w	LOW FRONT FILL	N/C	5/90	FF5
(21)	CAT D TOP PIPE	8	ETC Source4 19deg 750W+Light Acc S4B Template Holder 750w	FRONT	R53, T: R78784	1/26	F1
(22)	CAT D	7	ETC Source4 26deg 750W+Light Acc S4B Template Holder 750w	FRONT	R53, T: R78784	1/59	F2
(23)	CAT D TOP PIPE	7	ETC Source4 19deg 750W+Light Acc S4B Template Holder 750w	FRONT	R53, T: R78784	1/27	F3
(24)	CAT D	5	ETC Source4 26deg 750W+Light Acc S4B Template Holder 750w	FRONT	R53, T: R78784	1/61	F4
(25)	CAT D	6	ETC Source4 26deg 750W+Light Acc S4B Template Holder 750w	FRONT	R53, T: R78784	1/60	F5
(26)	CAT D TOP PIPE	6	ETC Source4 19deg 750W+Light Acc S4B Template Holder 750w	FRONT	R53, T: R78784	1/28	F6
(27)	CAT D	4	ETC Source4 26deg 750W+Light Acc S4B Template Holder 750w	FRONT	R53, T: R78784	1/56	F7
(28)	CAT D TOP PIPE	5	ETC Source4 26deg 750W+Light Acc S4B Template Holder 750w	FRONT	R53, T: R78784	1/34	F8
(29)	CAT D TOP PIPE	4	ETC Source4 19deg 750W+Light Acc S4B Template Holder 750w	FRONT	R53, T: R78784	1/35	F9
(30)	CAT D	3	ETC Source4 26deg 750W+Light Acc S4B Template Holder 750w	FRONT	R53, T: R78784	1/57	F10
(31)	CAT D	2	ETC Source4 26deg 750W+Light Acc S4B Template Holder 750w	FRONT	R53, T: R78784	1/58	F11
(32)	CAT D TOP PIPE	3	ETC Source4 19deg 750W+Light Acc S4B Template Holder 750w	FRONT	R53, T: R78784	1/36	F12
(33)	CAT D	1	ETC Source4 26deg 750W+Light Acc S4B Template Holder 750w	FRONT	R53, T: R78784	1/82	F13
(34)	CAT D TOP PIPE	2	ETC Source4 19deg 750W+Light Acc S4B Template Holder 750w	FRONT	R53, T: R78784	1/84	F14
(35)	CAT D TOP PIPE	1	ETC Source4 19deg 750W+Light Acc S4B Template Holder 750w	FRONT	R53, T: R78784	1/83	F15

Channel	Pos	U#	Instrument Type & Accessory & Load	Purpose	Clr & Gbo	Address	VWF
(41)	CAT A	5	Altman Phoneix LED 36 deg 250w	CC HIGH SIDE	N/C, T: ALTMAN DIFFUSER	2/70	HSR1
(42)	CAT A	3	Altman Phoneix LED 36 deg 250w	CC HIGH SIDE	N/C, T: ALTMAN DIFFUSER	2/80	HSR 2
(43)	CAT A	6	Altman Phoneix LED 26 deg 250w	CC HIGH SIDE	N/C, T: ALTMAN DIFFUSER	2/90	HSR 3
(44)	CAT A	2	Altman Phoneix LED 26 deg+Light Acc USITT 3in Top Hat 250w	CC HIGH SIDE	N/C, T: ALTMAN DIFFUSER	2/100	HSR 4
(45)	CAT A	4	Altman Phoneix LED 26 deg 250w	CC HIGH SIDE	N/C, T: ALTMAN DIFFUSER	2/110	HSR 5
(46)	CAT A TOP PIPE	3	Altman Phoneix LED 19 deg 250w	CC HIGH SIDE	N/C, T: ALTMAN DIFFUSER	2/120	HSR 6
(47)	CAT A TOP PIPE	1	Altman Phoneix LED 19 deg+Light Acc USITT 3in Top Hat 250w	CC HIGH SIDE	N/C, T: ALTMAN DIFFUSER	2/130	HSR 7
(48)	CAT A TOP PIPE	2	Altman Phoneix LED 19 deg 250w	CC HIGH SIDE	N/C, T: ALTMAN DIFFUSER	2/140	HSR 8
(51)	CAT E TOP PIPE	2	ETC Source4 19deg 750W+Light Acc S4B Template Holder 750w	COOL TXTR SIDE	R64, T: R915	1/31	HSL1
(52)	CAT E TOP PIPE	3	ETC Source4 19deg 750W+Light Acc USITT 3in Top Hat+Light Acc S4B Template Holder 750w	COOL TXTR SIDE	R64, T: R915	1/32	HSL 2
(53)	CAT E TOP PIPE	1	ETC Source4 19deg 750W+Light Acc S4B Template Holder 750w	COOL TXTR SIDE	R64, T: R915	1/30	HSL 3
(54)	CAT E	16	ETC Source4 26deg 750W+Light Acc S4B Template Holder 750w	COOL TXTR SIDE	R64, T: R915	1/54	HSL 4
(55)	CAT E	14	ETC Source4 26deg 750W+Light Acc S4B Template Holder 750w	COOL TXTR SIDE	R64, T: R915	1/39	HSL 5

Channel	Pos	U#	Instrument Type & Accessory & Load	Purpose	Clr & Gbo	Address	VWF
(56)	CAT E	12	ETC Source4 26deg 750W+Light Acc S4B Template Holder 750w	COOL TXTR SIDE	R64, T: R915	1/50	HSL 6
(57)	CAT E	15	ETC Source4 36deg 750W+Light Acc S4B Template Holder 750w	COOL TXTR SIDE	R64, T: R915	1/38	HSL7
(58)	CAT E	13	ETC Source4 36deg 750W+Light Acc S4B Template Holder 750w	COOL TXTR SIDE	R64, T: R915	1/40	HSL 8
(61)	MEZZ	11	ETC Source4 36deg 750W+Light Acc S4B Template Holder 750w	WARM TXTR SIDE	R08, T: R76597	1/12	SR1
(62)	MEZZ	10	ETC Source4 36deg 750W+Light Acc USITT 3in Top Hat+Light Acc S4B Template Holder 750w	WARM TXTR SIDE	R08, T: R76597	1/17	SR3
(63)	MEZZ	13	ETC Source4 36deg 750W+Light Acc S4B Template Holder 750w	WARM TXTR SIDE	R08, T: R76597	1/10	SR2
(64)	MEZZ TOP PIPE	1	ETC Source4 26deg 750W+Light Acc USITT 3in Top Hat+Light Acc S4B Template Holder 750w	WARM TXTR SIDE	R08, T: R76597	1/20	SR6
(65)	MEZZ	12	ETC Source4 26deg 750W+Light Acc S4B Template Holder 750w	WARM TXTR SIDE	R08, T: R76597	1/11	SR4
(66)	MEZZ	14	ETC Source4 26deg 750W+Light Acc S4B Template Holder 750w	WARM TXTR SIDE	R08, T: R76597	1/9	SR5
(67)	MEZZ TOP PIPE	3	ETC Source4 26deg 750W+Light Acc S4B Template Holder 750w	WARM TXTR SIDE	R08, T: R76597	1/18	SR7
(68)	MEZZ TOP PIPE	2	ETC Source4 19deg 750W+Light Acc USITT 3in Top Hat+Light Acc S4B Template Holder 750w	WARM TXTR SIDE	R08, T: R76597	1/19	SR8
(71)	MEZZ TOP PIPE	5	Altman Phoneix LED 19 deg+Light Acc USITT 3in Top Hat 250w	CC SIDE	N/C, T: ALTMAN DIFFUSER	5/110	SL8
(72)	MEZZ TOP PIPE	6	Altman Phoneix LED 19 deg+Light Acc USITT 3in Top Hat 250w	CC SIDE	N/C, T: ALTMAN DIFFUSER	5/120	SL6
(73)	MEZZ TOP PIPE	4	Altman Phoneix LED 19 deg 250w	CC SIDE	N/C, T: ALTMAN DIFFUSER	5/130	SL7
(74)	MEZZ	25	Altman Phoneix LED 26 deg+Light Acc USITT 3in Top Hat 250w	CC SIDE	N/C, T: ALTMAN DIFFUSER	5/140	SL3

Channel	Pos	U#	Instrument Type & Accessory & Load	Purpose	Clr & Gbo	Address	VWF
(75)	MEZZ	21	Altman Phoneix LED 26 deg 250w	CC SIDE	N/C, T: ALTMAN DIFFUSER	5/150	SL5
(76)	MEZZ	23	Altman Phoneix LED 26 deg 250w	CC SIDE	N/C, T: ALTMAN DIFFUSER	5/160	SL4
(77)	MEZZ	24	Altman Phoneix LED 36 deg 250w	CC SIDE	N/C, T: ALTMAN DIFFUSER	5/170	SL1
(78)	MEZZ	22	Altman Phoneix LED 36 deg 250w	CC SIDE	N/C, T: ALTMAN DIFFUSER	5/180	SL2
(81)	CAT A	11	ETC Source4 36deg 750W+Light Acc S4B Template Holder 750w	BACK	G885, T: R78636	1/68	D1
(82)	TRUS S B	1	ETC Source4 36deg 750W+Light Acc S4B Template Holder 750w	BACK	G885, T: R78636	1/45	D3
(83)	CAT A	12	ETC Source4 36deg 750W+Light Acc S4B Template Holder 750w	BACK	G885, T: R78636	1/67	D2
(84)	CAT B	8	ETC Source4 36deg 750W+Light Acc S4B Template Holder 750w	BACK	G885, T: R78636	1/69	D5
(85)	TRUS S B	2	ETC Source4 36deg 750W+Light Acc S4B Template Holder 750w	BACK	G885, T: R78636	1/46	D6
(86)	CAT C	5	ETC Source4 36deg 750W+Light Acc S4B Template Holder 750w	BACK	G885, T: R78636	1/65	D4
(87)	CAT B	4	ETC Source4 36deg 750W+Light Acc S4B Template Holder 750w	BACK	G885, T: R78636	1/72	D9
(88)	TRUS S B	4	ETC Source4 36deg 750W+Light Acc S4B Template Holder 750w	BACK	G885, T: R78636	1/48	D10
(89)	CAT C	1	ETC Source4 36deg 750W+Light Acc S4B Template Holder 750w	BACK	G885, T: R78636	1/80	D7
(90)	CAT C	10	ETC Source4 36deg 750W+Light Acc S4B Template Holder 750w	BACK	G885, T: R78636	1/71	D8

Channel	Pos	U#	Instrument Type & Accessory & Load	Purpose	Clr & Gbo	Address	VWF
(91)	CAT E	7	ETC Source4 36deg 750W+Light Acc S4B Template Holder 750w	BACK	G885, T: R78636	1/77	D11
(92)	TRUS S B	5	ETC Source4 36deg 750W+Light Acc S4B Template Holder 750w	BACK	G885, T: R78636	1/49	D12
(93)	CAT E	8	ETC Source4 36deg 750W+Light Acc S4B Template Holder 750w	BACK	G885, T: R78636	1/52	D13
(95)	CAT B	1	Altman Phoneix LED 36 deg 250w	WALL A SP	N/C	4/110	
(96)	CAT B	7	Altman Phoneix LED 50 deg 250w	WALL C WASH	N/C, T: ALTMAN DIFFUSER	4/120	
(97)	CAT B	5	Altman Phoneix LED 50 deg 250w	WALL C WASH	N/C	4/130	
(98)	CAT B	3	Altman Phoneix LED 50 deg 250w	WALL C WASH	N/C, T: ALTMAN DIFFUSER	4/140	
(99)	MEZZ	16	Altman Phoneix LED 36 deg 250w	WALL C SP	N/C, T: ALTMAN DIFFUSER	5/190	
(101)	CAT B TOP PIPE	1	ETC Source4 36deg 750W 750w	WINDOW SP	G872	1/44	
(102)	MEZZ	18	ETC Source4 36deg 750W 750w	WALL B WINDOW SP	G872	1/15	
(103)	MEZZ	19	ETC Source4 36deg 750W 750w	WALL B DOOR SP	G872	1/14	
(104)	MEZZ	20	ETC Source4 36deg 750W 750w	WALL B WINDOW SP	G872	1/24	
(105)	UNDER MEZZ	1	ETC Source4 50deg 750 750w	WALL C WINDOW SP	N/C	1/29	
(106)	WALL A	1	USITT Practical	PORCH LX	N/C	1/1	
(107)	WALL A	2	USITT Practical	LAMP	N/C	1/2	
(108)	WALL C	1	USITT Practical	BUD LIGHT	N/C	1/22	

Channel	Pos	U#	Instrument Type & Accessory & Load	Purpose	Clr & Gbo	Address	VWF
(109)	WALL C	2	Altman Q Lite 1kW	SHOP LX	N/C	1/21	
(110)	CAT A TOP PIPE	4	ETC Source4 PAR MFL 575w	WHALE SP	R378	1/96	
(111)	MEZZ	6	ETC Source4 36deg 750W+Light Acc S4B Template Holder 750w	CHURCH SP	G872, T: R146B	1/33	
	"	8	"	"	"	"	
(112)	CAT C	2	ETC Source4 36deg 750W 750w	BARN DOOR SP	R53	1/92	
(113)	CAT E	5	ETC Source4 36deg 750W 750w	BULKHEA D SP	G872	1/78	
(115)	CAT A	10	ETC Source4 26deg+Light Acc Iris 575w	SHADOW SP	G872	1/70	
(116)	TRUS S B	3	ETC Source4 26deg+Light Acc Iris 575w	SHADOW SP	G872	1/53	
(117)	CAT C	9	ETC Source4 26deg+Light Acc Iris 575w	SHADOW SP	G872	1/41	
(118)	CAT E	9	ETC Source4 26deg+Light Acc Iris 575w	SHADOW SP	G872	1/94	
(121)	CAT A	7	Altman Phoneix LED 36 deg 250w	JUNK TXTR	N/C, T: ALTMAN DIFFUSER	2/150	
(122)	CAT E	10	Altman Phoneix LED 36 deg 250w	JUNK TXTR	N/C, T: ALTMAN DIFFUSER	4/150	
(123)	WALL C	3	Chauvet EZ Par T6 USB 99w	FICUS LX	N/C	2/160	
(124)	BOOM	1	Chauvet COLORado 2 Quad Zoom Tour 205w	SUNRISE SP	N/C	5/200	
(126)	CAT D	11	ETC Source4 36deg 750W 750w	CHAIR SP	G872	1/88	
(130)	MEZZ	15	ETC Source4 PAR MFL+Light Acc 7.5in 4 Leaf Barn Door 575w	WALL A HOUSE LX	G872	1/13	
	"	17	"	"	"	"	

Channel	Pos	U#	Instrument Type & Accessory & Load	Purpose	Clr & Gbo	Address	VWF
(132)	CAT C	7	Altman Phoneix LED 26 deg 250w	I CUE	N/C, T: ALTMAN DIFFUSER	3/130	
	"	"	I-Cue	"	"	3/140	
(133)	CAT A	9	ETC Source4 36deg 750W 750w	STOOP SP	G872	1/42	
(141)	CAT A	16	ETC Source4 36deg 750W 750w	WALL A SP	R53	1/91	
(142)	CAT E	3	ETC Source4 36deg 750W 750w	WALL C SP	R53	1/79	
(151)	CAT D	13	ETC Source4 PARNel 750w	FRONT FILL	R51	1/87	FF1
(152)	CAT D	14	ETC Source4 PARNel 750w	FRONT FILL	R51	1/81	FF2
(153)	CAT E	2	ETC Source4 PARNel 750w	FRONT FILL	R51	1/85	FF3
(154)	CAT D	15	ETC Source4 PARNel 750w	FRONT FILL	R51	1/55	FF4
(155)	CAT E	1	ETC Source4 PARNel 750w	FRONT FILL	R51	1/86	FF5
(161)	CAT A	17	ETC Source4 PARNel 750w	FRONT FILL	G820	1/64	FF1
(162)	CAT A	1	ETC Source4 PARNel 750w	FRONT FILL	R362	1/62	FF2
(163)	CAT D	10	ETC Source4 PARNel 750w	FRONT FILL	G820	1/63	FF3
(164)	CAT D	8	ETC Source4 PARNel 750w	FRONT FILL	G820	1/90	FF4
(165)	CAT D	9	ETC Source4 PARNel 750w	FRONT FILL	G820	1/89	FF5

Channel Hookup

Channel	Pos	U#	Instrument Type & Accessory & Load	Purpose	Clr & Gbo	Address	VWF
(200)	MEZZ	5	ETC Source4 PAR WFL+Light Acc 7.5in 4 Leaf Barn Door 575w	HOUSE LX	N/C	1/25	
	"	7	"	"	"	"	
	"	9	"	"	"	"	
	"	26	"	"	"	1/37	
	"	27	"	"	"	"	
	"	28	"	"	"	"	

TABLE OF CONTENTS

BOOM	1	CAT D TOP PIPE	7
CAT A	1	CAT E	8
CAT A TOP PIPE	2	CAT E TOP PIPE	9
CAT B	3	MEZZ	10
CAT B TOP PIPE	3	MEZZ TOP PIPE	12
TRUSS B	4	WALL A	12
CAT C	5	WALL C	12
CAT D	6	UNDERMEZZ	12

BOOM

U#	Purpose	Instrument Type & Accessory	Load	Clr & Gbo	Chan	Addr	Dm
1	SUNRISE SP	Chauvet COLORado 2 Quad Zoom Tour	205w	N/C	(124)	5/200	

CAT A

U#	Purpose	Instrument Type & Accessory	Load	Clr & Gbo	Chan	Addr	Dm
1	FRONT FILL	ETC Source4 PARNeI	750w	R362	(162)	1/62	
2	CC HIGH SIDE	Altman Phoneix LED 26 deg+Light Acc USITT 3in Top Hat	250w	N/C, T: ALTMAN DIFFUSER	(44)	2/100	
3	CC HIGH SIDE	Altman Phoneix LED 36 deg	250w	N/C, T: ALTMAN DIFFUSER	(42)	2/80	
4	CC HIGH SIDE	Altman Phoneix LED 26 deg	250w	N/C, T: ALTMAN DIFFUSER	(45)	2/110	
5	CC HIGH SIDE	Altman Phoneix LED 36 deg	250w	N/C, T: ALTMAN DIFFUSER	(41)	2/70	
6	CC HIGH SIDE	Altman Phoneix LED 26 deg	250w	N/C, T: ALTMAN DIFFUSER	(43)	2/90	
7	JUNK TXTR	Altman Phoneix LED 36 deg	250w	N/C, T: ALTMAN DIFFUSER	(121)	2/150	
8	COLOR DOWN	Chauvet COLORado 2 Quad Zoom Tour	205w	N/C	(1)	2/10	
9	STOOP SP	ETC Source4 36deg 750W	750w	G872	(133)	1/42	
10	SHADOW SP	ETC Source4 26deg+Light Acc Iris	575w	G872	(115)	1/70	
11	BACK	ETC Source4 36deg 750W+Light Acc S4B Template Holder	750w	G885, T: R78636	(81)	1/68	
12	BACK	ETC Source4 36deg 750W+Light Acc S4B Template Holder	750w	G885, T: R78636	(83)	1/67	

CAT A

U#	Purpose	Instrument Type & Accessory	Load	Clr & Gbo	Chan	Addr	Dm
13	COLOR DOWN	Chauvet COLORado 2 Quad Zoom Tour	205w	N/C	(2)	2/30	
15	COLOR DOWN	Chauvet COLORado 2 Quad Zoom Tour	205w	N/C	(3)	2/50	
16	WALL A SP	ETC Source4 36deg 750W	750w	R53	(141)	1/91	
17	FRONT FILL	ETC Source4 PARNel	750w	G820	(161)	1/64	

CAT A TOP PIPE

U#	Purpose	Instrument Type & Accessory	Load	Clr & Gbo	Chan	Addr	Dm
1	CC HIGH SIDE	Altman Phoneix LED 19 deg+Light Acc USITT 3in Top Hat	250w	N/C, T: ALTMAN DIFFUSER	(47)	2/130	
2	CC HIGH SIDE	Altman Phoneix LED 19 deg	250w	N/C, T: ALTMAN DIFFUSER	(48)	2/140	
3	CC HIGH SIDE	Altman Phoneix LED 19 deg	250w	N/C, T: ALTMAN DIFFUSER	(46)	2/120	
4	WHALE SP	ETC Source4 PAR MFL	575w	R378	(110)	1/96	

CAT B

U#	Purpose	Instrument Type & Accessory	Load	Clr & Gbo	Chan	Addr	Dm
1	WALL A SP	Altman Phoneix LED 36 deg	250w	N/C	(95)	4/110	
2	COLOR DOWN	Chauvet COLORado 2 Quad Zoom Tour	205w	N/C	(9)	4/30	
3	WALL C WASH	Altman Phoneix LED 50 deg	250w	N/C, T: ALTMAN DIFFUSER	(98)	4/140	
4	BACK	ETC Source4 36deg 750W+Light Acc S4B Template Holder	750w	G885, T: R78636	(87)	1/72	
5	WALL C WASH	Altman Phoneix LED 50 deg	250w	N/C	(97)	4/130	
6	COLOR DOWN	Chauvet COLORado 2 Quad Zoom Tour	205w	N/C	(5)	4/10	
7	WALL C WASH	Altman Phoneix LED 50 deg	250w	N/C, T: ALTMAN DIFFUSER	(96)	4/120	
8	BACK	ETC Source4 36deg 750W+Light Acc S4B Template Holder	750w	G885, T: R78636	(84)	1/69	

CAT B TOP PIPE

U#	Purpose	Instrument Type & Accessory	Load	Clr & Gbo	Chan	Addr	Dm
1	WINDOW SP	ETC Source4 36deg 750W	750w	G872	(101)	1/44	

TRUSS B

U#	Purpose	Instrument Type & Accessory	Load	Clr & Gbo	Chan	Addr	Dm
1	BACK	ETC Source4 36deg 750W+Light Acc S4B Template Holder	750w	G885, T: R78636	(82)	1/45	
2	BACK	ETC Source4 36deg 750W+Light Acc S4B Template Holder	750w	G885, T: R78636	(85)	1/46	
3	SHADOW SP	ETC Source4 26deg+Light Acc Iris	575w	G872	(116)	1/53	
4	BACK	ETC Source4 36deg 750W+Light Acc S4B Template Holder	750w	G885, T: R78636	(88)	1/48	
5	BACK	ETC Source4 36deg 750W+Light Acc S4B Template Holder	750w	G885, T: R78636	(92)	1/49	

CAT C

U#	Purpose	Instrument Type & Accessory	Load	Clr & Gbo	Chan	Addr	Dm
1	BACK	ETC Source4 36deg 750W+Light Acc S4B Template Holder	750w	G885, T: R78636	(89)	1/80	
2	BARN DOOR SP	ETC Source4 36deg 750W	750w	R53	(112)	1/92	
3	COLOR DOWN	Chauvet COLORado 2 Quad Zoom Tour	205w	N/C	(6)	3/30	
4	CENTER COLOR DOWN	Chauvet COLORado 2 Quad Zoom Tour	205w	N/C	(7)	3/50	
5	BACK	ETC Source4 36deg 750W+Light Acc S4B Template Holder	750w	G885, T: R78636	(86)	1/65	
6	COLOR DOWN	Chauvet COLORado 2 Quad Zoom Tour	205w	N/C	(4)	3/10	
7	I CUE	Altman Phoneix LED 26 deg	250w	N/C, T: ALTMAN DIFFUSER	(132)	3/130	
7	I CUE	I-Cue		N/C, T: ALTMAN DIFFUSER	(132)	3/140	
8	COLOR DOWN	Chauvet COLORado 2 Quad Zoom Tour	205w	N/C	(8)	3/70	
9	SHADOW SP	ETC Source4 26deg+Light Acc Iris	575w	G872	(117)	1/41	
10	BACK	ETC Source4 36deg 750W+Light Acc S4B Template Holder	750w	G885, T: R78636	(90)	1/71	
11	COLOR DOWN	Chauvet COLORado 2 Quad Zoom Tour	205w	N/C	(11)	3/110	

CAT D

U#	Purpose	Instrument Type & Accessory	Load	Clr & Gbo	Chan	Addr	Dm
1	FRONT	ETC Source4 26deg 750W+Light Acc S4B Template Holder	750w	R53, T: R78784	(33)	1/82	
2	FRONT	ETC Source4 26deg 750W+Light Acc S4B Template Holder	750w	R53, T: R78784	(31)	1/58	
3	FRONT	ETC Source4 26deg 750W+Light Acc S4B Template Holder	750w	R53, T: R78784	(30)	1/57	
4	FRONT	ETC Source4 26deg 750W+Light Acc S4B Template Holder	750w	R53, T: R78784	(27)	1/56	
5	FRONT	ETC Source4 26deg 750W+Light Acc S4B Template Holder	750w	R53, T: R78784	(24)	1/61	
6	FRONT	ETC Source4 26deg 750W+Light Acc S4B Template Holder	750w	R53, T: R78784	(25)	1/60	
7	FRONT	ETC Source4 26deg 750W+Light Acc S4B Template Holder	750w	R53, T: R78784	(22)	1/59	
8	FRONT FILL	ETC Source4 PARNel	750w	G820	(164)	1/90	
9	FRONT FILL	ETC Source4 PARNel	750w	G820	(165)	1/89	
10	FRONT FILL	ETC Source4 PARNel	750w	G820	(163)	1/63	
11	CHAIR SP	ETC Source4 36deg 750W	750w	G872	(126)	1/88	
12	COLOR DOWN	Chauvet COLORado 2 Quad Zoom Tour	205w	N/C	(10)	3/90	
13	FRONT FILL	ETC Source4 PARNel	750w	R51	(151)	1/87	
14	FRONT FILL	ETC Source4 PARNel	750w	R51	(152)	1/81	
15	FRONT FILL	ETC Source4 PARNel	750w	R51	(154)	1/55	

CAT D TOP PIPE

U#	Purpose	Instrument Type & Accessory	Load	Clr & Gbo	Chan	Addr	Dm
1	FRONT	ETC Source4 19deg 750W+Light Acc S4B Template Holder	750w	R53, T: R78784	(35)	1/83	
2	FRONT	ETC Source4 19deg 750W+Light Acc S4B Template Holder	750w	R53, T: R78784	(34)	1/84	
3	FRONT	ETC Source4 19deg 750W+Light Acc S4B Template Holder	750w	R53, T: R78784	(32)	1/36	
4	FRONT	ETC Source4 19deg 750W+Light Acc S4B Template Holder	750w	R53, T: R78784	(29)	1/35	
5	FRONT	ETC Source4 26deg 750W+Light Acc S4B Template Holder	750w	R53, T: R78784	(28)	1/34	
6	FRONT	ETC Source4 19deg 750W+Light Acc S4B Template Holder	750w	R53, T: R78784	(26)	1/28	
7	FRONT	ETC Source4 19deg 750W+Light Acc S4B Template Holder	750w	R53, T: R78784	(23)	1/27	
8	FRONT	ETC Source4 19deg 750W+Light Acc S4B Template Holder	750w	R53, T: R78784	(21)	1/26	

CAT E

U#	Purpose	Instrument Type & Accessory	Load	Clr & Gbo	Chan	Addr	Dm
1	FRONT FILL	ETC Source4 PARNeI	750w	R51	(155)	1/86	
2	FRONT FILL	ETC Source4 PARNeI	750w	R51	(153)	1/85	
3	WALL C SP	ETC Source4 36deg 750W	750w	R53	(142)	1/79	
4	COLOR DOWN	Chauvet COLORado 2 Quad Zoom Tour	205w	N/C	(12)	4/50	
5	BULKHEAD SP	ETC Source4 36deg 750W	750w	G872	(113)	1/78	
6	COLOR DOWN	Chauvet COLORado 2 Quad Zoom Tour	205w	N/C	(13)	4/70	
7	BACK	ETC Source4 36deg 750W+Light Acc S4B Template Holder	750w	G885, T: R78636	(91)	1/77	
8	BACK	ETC Source4 36deg 750W+Light Acc S4B Template Holder	750w	G885, T: R78636	(93)	1/52	
9	SHADOW SP	ETC Source4 26deg+Light Acc Iris	575w	G872	(118)	1/94	
10	JUNK TXTR	Altman Phoneix LED 36 deg	250w	N/C, T: ALTMAN DIFFUSER	(122)	4/150	
11	COLOR DOWN	Chauvet COLORado 2 Quad Zoom Tour	205w	N/C	(14)	4/90	
12	COOL TXTR SIDE	ETC Source4 26deg 750W+Light Acc S4B Template Holder	750w	R64, T: R915	(56)	1/50	
13	COOL TXTR SIDE	ETC Source4 36deg 750W+Light Acc S4B Template Holder	750w	R64, T: R915	(58)	1/40	
14	COOL TXTR SIDE	ETC Source4 26deg 750W+Light Acc S4B Template Holder	750w	R64, T: R915	(55)	1/39	
15	COOL TXTR SIDE	ETC Source4 36deg 750W+Light Acc S4B Template Holder	750w	R64, T: R915	(57)	1/38	

CAT E

U#	Purpose	Instrument Type & Accessory	Load	Clr & Gbo	Chan	Addr	Dm
16	COOL TXTR SIDE	ETC Source4 26deg 750W+Light Acc S4B Template Holder	750w	R64, T: R915	(54)	1/54	

CAT E TOP PIPE

U#	Purpose	Instrument Type & Accessory	Load	Clr & Gbo	Chan	Addr	Dm
1	COOL TXTR SIDE	ETC Source4 19deg 750W+Light Acc S4B Template Holder	750w	R64, T: R915	(53)	1/30	
2	COOL TXTR SIDE	ETC Source4 19deg 750W+Light Acc S4B Template Holder	750w	R64, T: R915	(51)	1/31	
3	COOL TXTR SIDE	ETC Source4 19deg 750W+Light Acc USITT 3in Top Hat+Light Acc S4B Template Holder	750w	R64, T: R915	(52)	1/32	

MEZZ

U#	Purpose	Instrument Type & Accessory	Load	Clr & Gbo	Chan	Addr	Dm
1	LOW FRONT FILL	Chauvet COLORado 2 Quad Zoom Tour	205w	N/C	(18)	5/70	
2	LOW FRONT FILL	Chauvet COLORado 2 Quad Zoom Tour	205w	N/C	(17)	5/50	
3	LOW FRONT FILL	Chauvet COLORado 2 Quad Zoom Tour	205w	N/C	(16)	5/30	
4	LOW FRONT FILL	Chauvet COLORado 2 Quad Zoom Tour	205w	N/C	(15)	5/10	
5	HOUSE LX	ETC Source4 PAR WFL+Light Acc 7.5in 4 Leaf Barn Door	575w	N/C	(200)	1/25	
6	CHURCH SP	ETC Source4 36deg 750W+Light Acc S4B Template Holder	750w	G872, T: R146B	(111)	1/33	
7	HOUSE LX	ETC Source4 PAR WFL+Light Acc 7.5in 4 Leaf Barn Door	575w	N/C	(200)	1/25	
8	CHURCH SP	ETC Source4 36deg 750W+Light Acc S4B Template Holder	750w	G872, T: R146B	(111)	1/33	
9	HOUSE LX	ETC Source4 PAR WFL+Light Acc 7.5in 4 Leaf Barn Door	575w	N/C	(200)	1/25	
10	WARM TXTR SIDE	ETC Source4 36deg 750W+Light Acc USITT 3in Top Hat+Light Acc S4B Template Holder	750w	R08, T: R76597	(62)	1/17	
11	WARM TXTR SIDE	ETC Source4 36deg 750W+Light Acc S4B Template Holder	750w	R08, T: R76597	(61)	1/12	
12	WARM TXTR SIDE	ETC Source4 26deg 750W+Light Acc S4B Template Holder	750w	R08, T: R76597	(65)	1/11	
13	WARM TXTR SIDE	ETC Source4 36deg 750W+Light Acc S4B Template Holder	750w	R08, T: R76597	(63)	1/10	
14	WARM TXTR SIDE	ETC Source4 26deg 750W+Light Acc S4B Template Holder	750w	R08, T: R76597	(66)	1/9	
15	WALL A HOUSE LX	ETC Source4 PAR MFL+Light Acc 7.5in 4 Leaf Barn Door	575w	G872	(130)	1/13	

MEZZ

U#	Purpose	Instrument Type & Accessory	Load	Clr & Gbo	Chan	Addr	Dm
16	WALL C SP	Altman Phoneix LED 36 deg	250w	N/C, T: ALTMAN DIFFUSER	(99)	5/190	
17	WALL A HOUSE LX	ETC Source4 PAR MFL+Light Acc 7.5in 4 Leaf Barn Door	575w	G872	(130)	1/13	
18	WALL B WINDOW SP	ETC Source4 36deg 750W	750w	G872	(102)	1/15	
19	WALL B DOOR SP	ETC Source4 36deg 750W	750w	G872	(103)	1/14	
20	WALL B WINDOW SP	ETC Source4 36deg 750W	750w	G872	(104)	1/24	
21	CC SIDE	Altman Phoneix LED 26 deg	250w	N/C, T: ALTMAN DIFFUSER	(75)	5/150	
22	CC SIDE	Altman Phoneix LED 36 deg	250w	N/C, T: ALTMAN DIFFUSER	(78)	5/180	
23	CC SIDE	Altman Phoneix LED 26 deg	250w	N/C, T: ALTMAN DIFFUSER	(76)	5/160	
24	CC SIDE	Altman Phoneix LED 36 deg	250w	N/C, T: ALTMAN DIFFUSER	(77)	5/170	
25	CC SIDE	Altman Phoneix LED 26 deg+Light Acc USITT 3in Top Hat	250w	N/C, T: ALTMAN DIFFUSER	(74)	5/140	
26	HOUSE LX	ETC Source4 PAR WFL+Light Acc 7.5in 4 Leaf Barn Door	575w	N/C	(200)	1/37	
27	HOUSE LX	ETC Source4 PAR WFL+Light Acc 7.5in 4 Leaf Barn Door	575w	N/C	(200)	1/37	
28	HOUSE LX	ETC Source4 PAR WFL+Light Acc 7.5in 4 Leaf Barn Door	575w	N/C	(200)	1/37	
29	LOW FRONT FILL	Chauvet COLORado 2 Quad Zoom Tour	205w	N/C	(19)	5/90	

MEZZ TOP PIPE

U#	Purpose	Instrument Type & Accessory	Load	Clr & Gbo	Chan	Addr	Dm
1	WARM TXTR SIDE	ETC Source4 26deg 750W+Light Acc USITT 3in Top Hat+Light Acc S4B Template Holder	750w	R08, T: R76597	(64)	1/20	
2	WARM TXTR SIDE	ETC Source4 19deg 750W+Light Acc USITT 3in Top Hat+Light Acc S4B Template Holder	750w	R08, T: R76597	(68)	1/19	
3	WARM TXTR SIDE	ETC Source4 26deg 750W+Light Acc S4B Template Holder	750w	R08, T: R76597	(67)	1/18	
4	CC SIDE	Altman Phoneix LED 19 deg	250w	N/C, T: ALTMAN DIFFUSER	(73)	5/130	
5	CC SIDE	Altman Phoneix LED 19 deg+Light Acc USITT 3in Top Hat	250w	N/C, T: ALTMAN DIFFUSER	(71)	5/110	
6	CC SIDE	Altman Phoneix LED 19 deg+Light Acc USITT 3in Top Hat	250w	N/C, T: ALTMAN DIFFUSER	(72)	5/120	

WALL A

U#	Purpose	Instrument Type & Accessory	Load	Clr & Gbo	Chan	Addr	Dm
1	PORCH LX	USITT Practical		N/C	(106)	1/1	
2	LAMP	USITT Practical		N/C	(107)	1/2	

WALL C

U#	Purpose	Instrument Type & Accessory	Load	Clr & Gbo	Chan	Addr	Dm
1	BUD LIGHT	USITT Practical		N/C	(108)	1/22	
2	SHOP LX	Altman Q Lite	1kW	N/C	(109)	1/21	
3	FICUS LX	Chauvet EZ Par T6 USB	99w	N/C	(123)	2/160	

UNDERMEZZ

U#	Purpose	Instrument Type & Accessory	Load	Clr & Gbo	Chan	Addr	Dm
1	WALL C WINDOW SP	ETC Source4 50deg 750	750w	N/C	(105)	1/29	